

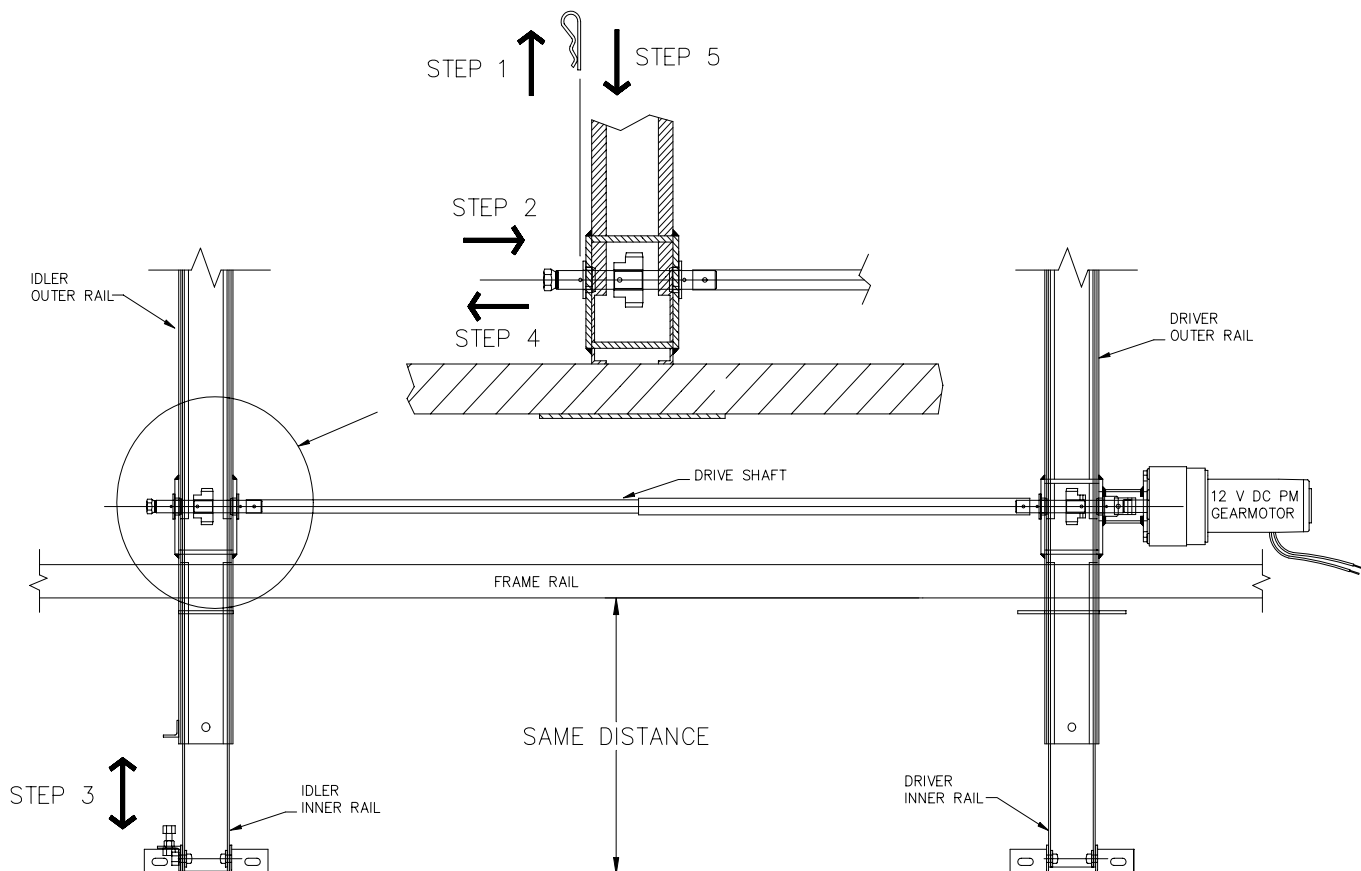


1217 E. 7<sup>th</sup> Street  
 Mishawaka, IN 46544  
 Phone: 1-800-334-4712  
 1-888-339-2539  
 Fax: 574-256-6743

## T.I.P. Troubleshooting Information on Power Gear

### Inner Rail Realignment

1. Remove cotter hairpin from idler drive shaft.
2. Push the idler drive shaft toward inner rail to disengage the gear from the gear rack.
3. Adjust the room by sliding the idler rail side of the room to the proper position (same distance from the frame as the drive rail side).
4. Push the idler drive shaft back into position engaging the gear and the gear rack.
5. Reinstall cotter hairpin in idler drive shaft.
6. Extend and retract room a couple of times and check for proper room flange sealing.
7. room is not aligned properly, repeat steps 1 thru 6.





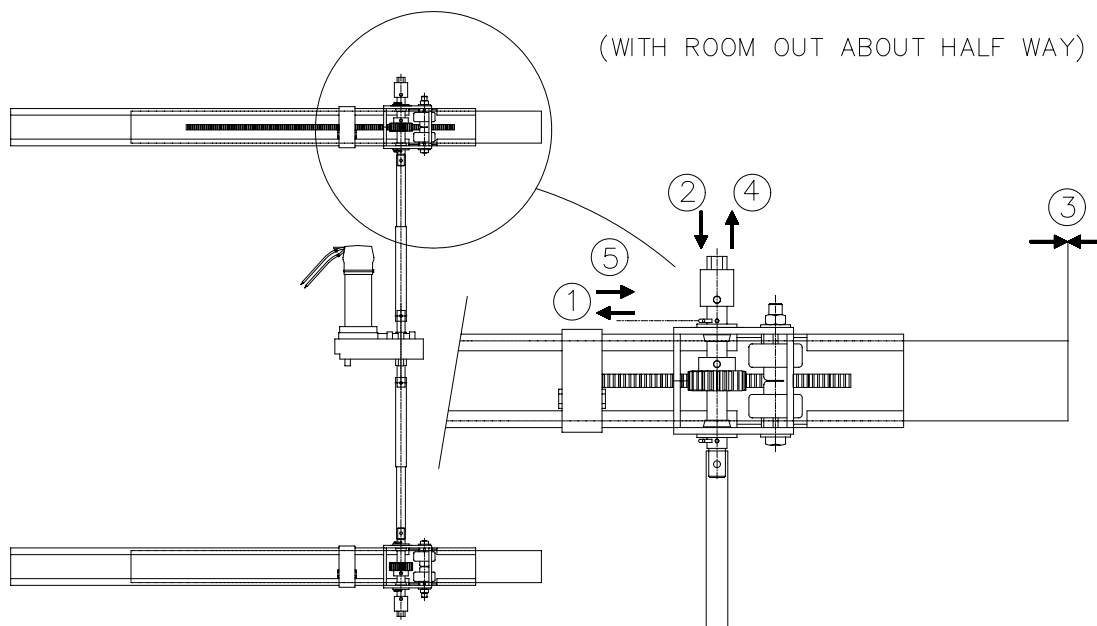
1217 E. 7<sup>th</sup> Street  
 Mishawaka, IN 46544  
 Phone: 1-800-334-4712  
 1-888-339-2539  
 Fax: 574-256-6743

## T.I.P. Troubleshooting Information on Power Gear

### SYNCHRONIZING A 2 RAIL SLIDE-OUT ROOM

Should the slide-out room go out of synchronization this procedure will allow you to retime the room. Measure room synchronization from common solid points at each end of the room.

#### TIMING SLIDE-OUT RAILS



**NOTE- This Tip Sheet does cover standard and flat floor slide-out systems.**

To synchronize the room please refer to the Figure below.

With room about half way out release slide-out motor brake.

1. Pull the clip pin out.
2. Slide the drive shaft assembly in to disengage gear from gear rack.
3. Moved slide-out inner rail in/out to desired location.
4. Slide drive shaft assembly back into position.
5. Push clip pin back into shaft.

Before proceeding put slide-out motor brake lever back into "Engaged" position.

TIP Sheet #134  
 82-S0304  
 03-02