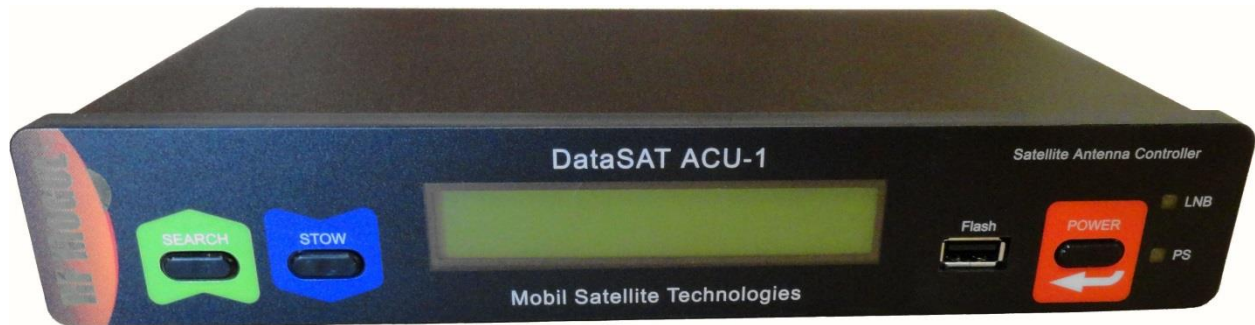


DataSAT 84CM Mobile VSAT System



Quick Wiring and Setup Guide

DataSAT ACU-1 and iDirect X5 Modem Connections

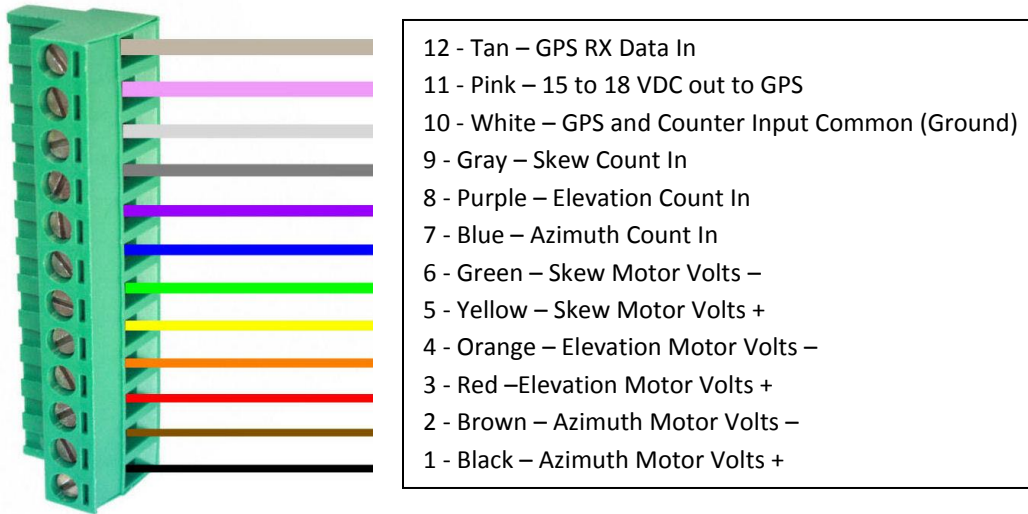
There are a total of 9 connections that must be connected correctly to the DataSAT ACU-1 Satellite Antenna Controller and the iDirect X5 Modem. These connections will go to the DataSAT 84CM Antenna, Network Router, and Power Supplies included with the Antenna Controller and Modem.



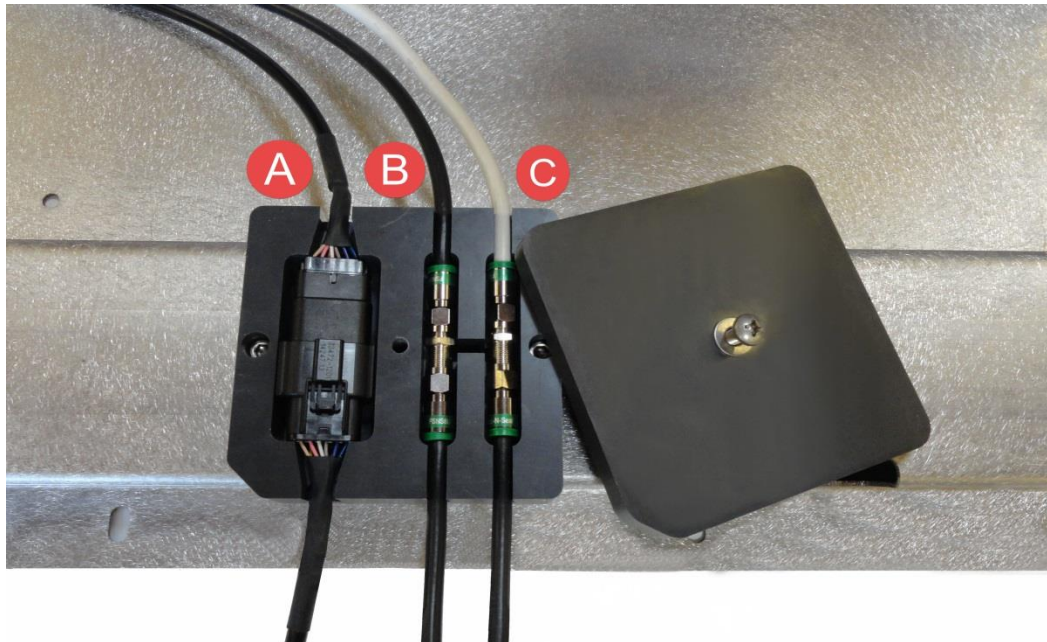
1. To 15-18 VDC 7 Amp Power Supply (supplied with Antenna Controller).
2. Antenna Control Connector output to DataSAT 84CM Antenna.
3. LAN port to External Router LAN port input.
4. Connects to X5 Modem RX In (yellow tag 8).
5. Connects to DataSAT 84CM Antenna LNB (RX Coax Cable).
6. To iDirect Power Supply +24 VDC 5A (supplied with Modem).
7. Connects to DataSAT 84CM Antenna BUC (TX Coax Cable).
8. Connects to ACU-1 To Modem RX In (yellow tag 4).
9. NO CONNECTION!
10. LAN A port to External Router WAN Port.



Control Cable wiring for the 12 POS Euro Style Connector on ACU-1 (yellow tag 2)



Connector Box on DataSAT 84 CM Roof Mounting Plate



- A. Antenna Control Cable Connection. Snap together Male (33482-1201 Molex) Antenna Side and Female (33472-1201 Molex) Control Cable to ACU-1 Antenna Controller.
- B. RX Cable to ACU-1 Antenna Controller. From LNB Black RG-6 Coax Cable. Labeled RX.
- C. TX Cable to X5 Modem TX Out. To BUC White RG-6 Coax Cable. Labeled TX.

DataSAT ACU-1 Satellite Antenna Controller Setup

Once the System is installed and wired properly the Antenna Controller is ready for setup and configuration.

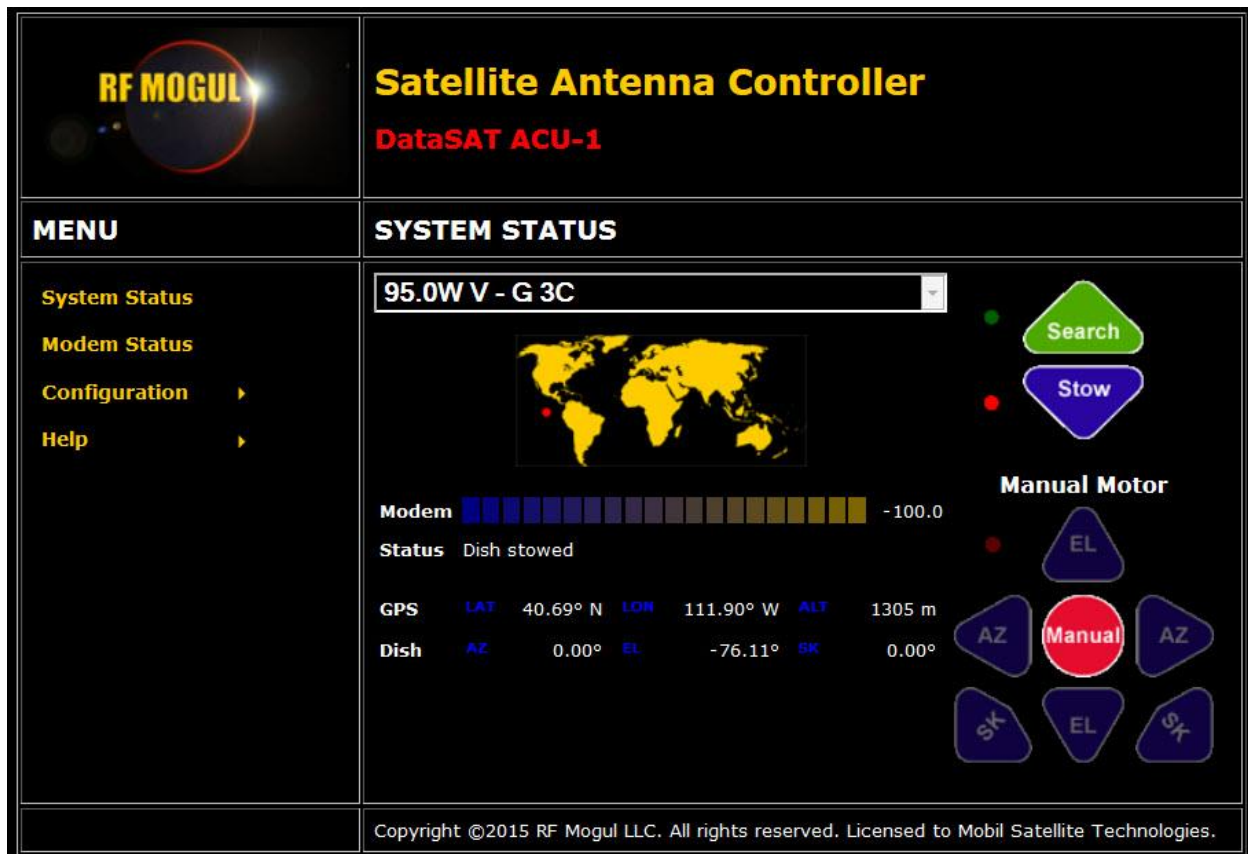
Turn on the ACU-1 Controller Power located on the front right side of the controller. The LCD should power on as shown below.



Open a Web Browser.



Enter the Controller IP Address. Default is 192.168.1.250.



If the ACU-1 HTML page does not come up you can confirm the controller IP address by using the Front Panel Menu commands. These are the *Power/Menu*, *Search/Up*, and *Stow/Down* buttons. Pressing the Power one time when the Controller is already on will enter the Menu Mode.

Using The Down button keep stepping the command until MENU 9: is displayed.

```
MENU Previous ↑ next ↓
9: ip address ↵
```

Press the Power/Menu button one more time to see the Controller IP Address.

```
IP 192.168.1.250
exit ↵
```

Move the mouse to highlight **Configuration** then select **Network Settings**.

MENU		NETWORK SETTINGS	
System Status		Obtain IP Address Automatically	Disabled ▾
Modem Status		IP Address	192 . 168 . 1 . 250
Configuration ▶	Network Settings	Subnet Mask	255 . 255 . 255 . 0
Help ▶	Search Settings	Modem Gateway	192 . 168 . 1 . 1
	RF Settings	Primary DNS Server	192 . 168 . 1 . 1
	Dish Calibration	Secondary DNS Server	0 . 0 . 0 . 0
		HTTP Port	80
		HTTPS Port	443
		FTP Port	21
		FTP Passive Port	10200
		Network Name	DataSAT
		Device Name	DataSAT ACU-1
		Administrator Username	admin
		Administrator Password	••••••••
		Administrator Password (repeated)	••••••••

Copyright ©2015 RF Mogul LLC. All rights reserved. Licensed to Mobil Satellite Technologies.

192.168.1.250/netcfq.htm

Confirm the Subnet Mask, Modem Gateway, and Primary DNS Server are as shown above.

Move the mouse to highlight **Configuration** then select **RF Settings**.

RF MOGUL **Satellite Antenna Controller**
DataSAT ACU-1

MENU **RF SETTINGS**

System Status
Modem Status
Configuration (selected)
Help

Network Settings
Search Settings
RF Settings
Dish Calibration

BUC Polarity: Horizontal

LNB 1 LNB 2 LNB 3

Offset: 0 Elevation Offset: 0

LNB Power	22 KHz Tone	DiSEqC	Polarity	LO Frequency (MHz)	Minimum RF Frequency (MHz)	Maximum RF Frequency (MHz)
18 V	Disabled	Disabled	Vertical	9750	10700	11700
18 V	Enabled	Disabled	Vertical	10600	11700	12750
Disabled						
Disabled						
Disabled						
Disabled						
Disabled						
Disabled						

Apply Cancel

Copyright ©2015 RF Mogul LLC. All rights reserved. Licensed to Mobil Satellite Technologies.

192.168.1.250/rfcfg.htm

Confirm the LNB settings are correct as shown above. Any errors on this page will result in the Antenna Controller not finding the correct satellite or the Modem not getting an RX Lock.

Move the mouse to highlight **Configuration** then select **Dish Calibration**.

RF MOGUL **Satellite Antenna Controller**
DataSAT ACU-1

MENU **DISH CALIBRATION**

System Status
Modem Status
Configuration (selected)
Help

Network Settings
Search Settings
RF Settings
Dish Calibration

The dish has an automatic calibration routine.

Before starting the routine you should make sure that the dish is installed and the vehicle is as level as possible.

Be ready to begin the calibration process, click button. Once the calibration process has begun, returned to the main status screen.

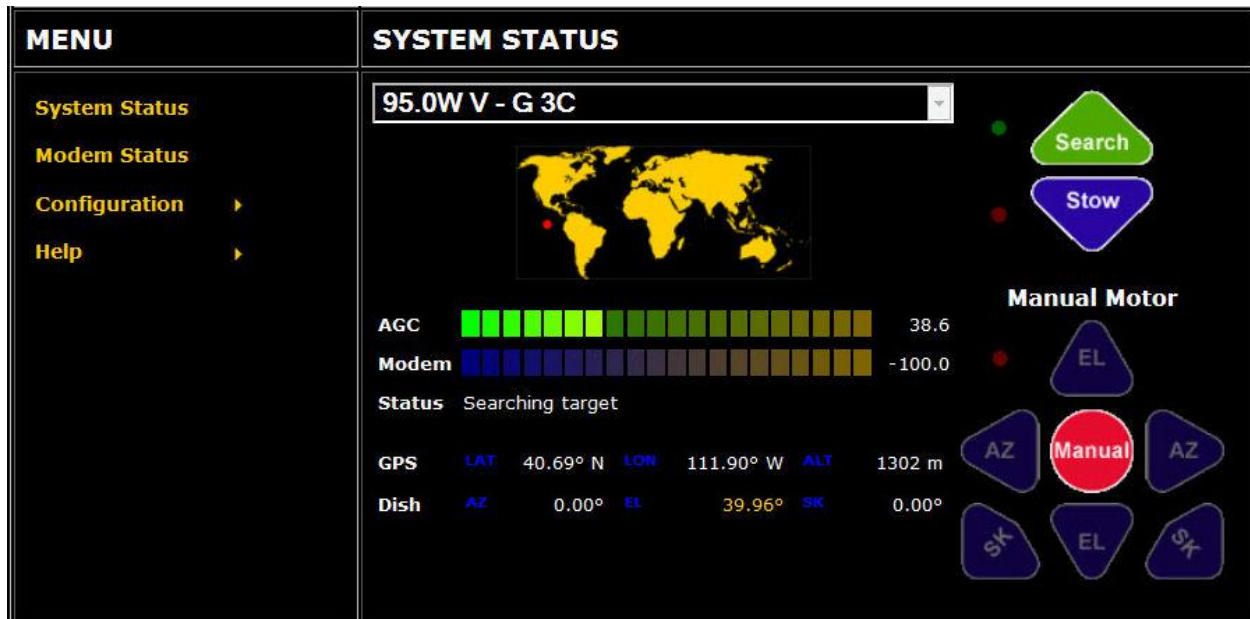
Cancel" button if you do not wish to perform the routine at this time.

Start Cancel

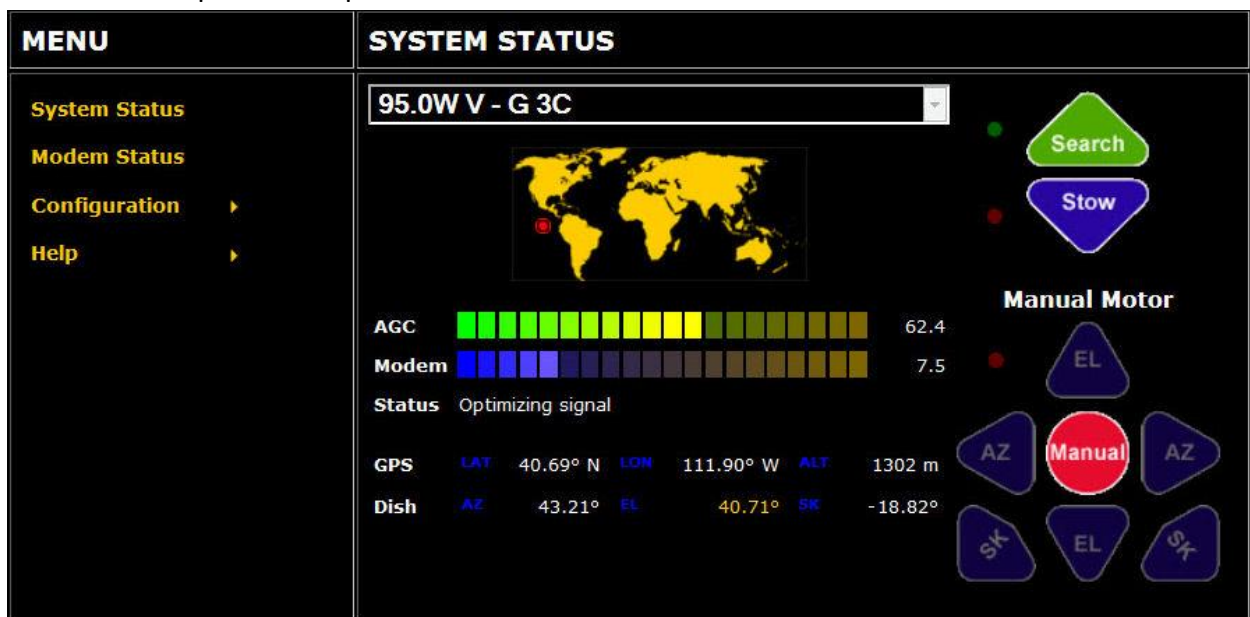
Copyright ©2015 RF Mogul LLC. All rights reserved. Licensed to Mobil Satellite Technologies.

Select Start. A Dish Calibration is required one time to complete installation and configuration. Once completed the System is ready for use.

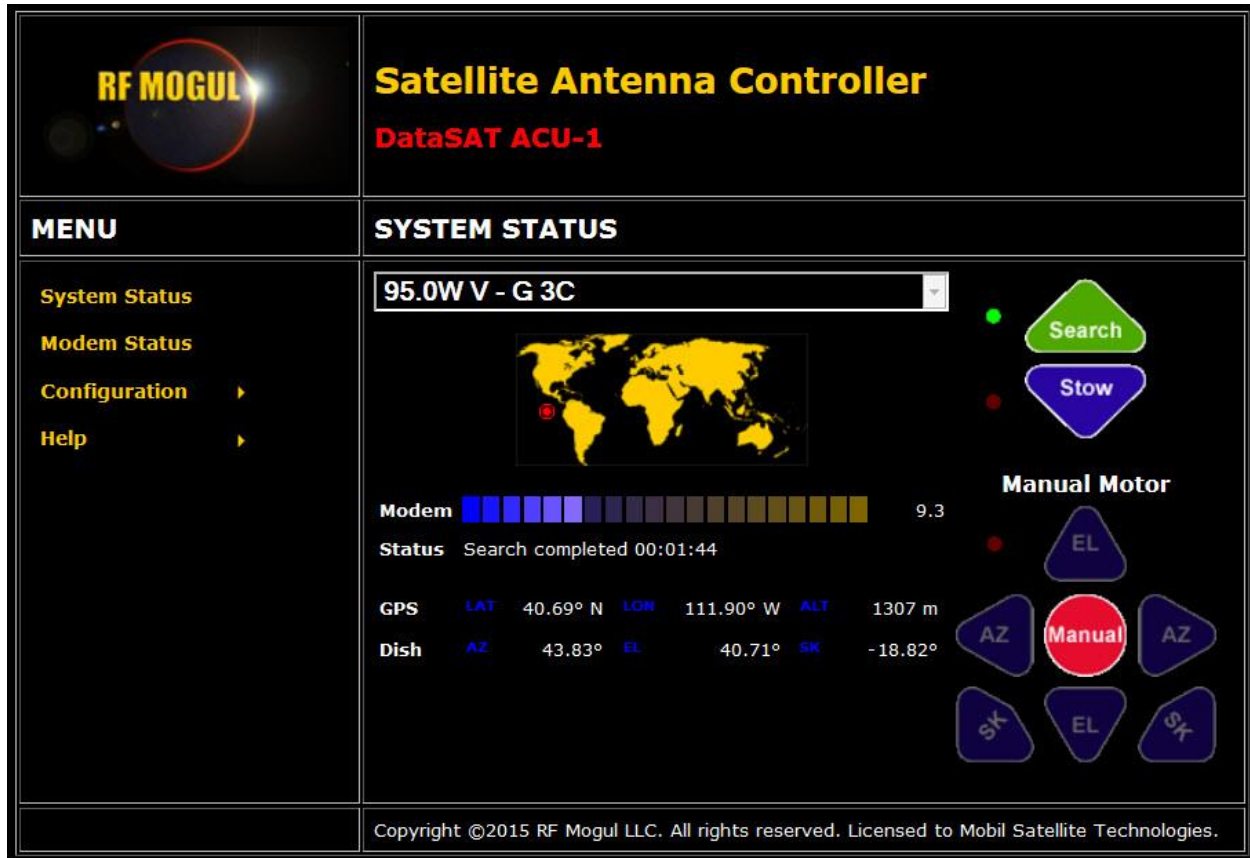
Press Search to begin.



Controller will peak and Optimize.



Search Complete.



System is ready for Modem Operation.

End of Document.